

JABRA EXTREME2  
Bluetooth® Mono Headset  
Works with any Bluetooth® enabled phone

DATASHEET



**EXTREME NOISE CANCELLATION  
FOR ANY ENVIRONMENT**

## Noise cancellation is now even more extreme

The Jabra EXTREME2 builds on the great success and technology of its predecessor, the Jabra EXTREME. Jabra EXTREME2 features Noise Blackout 3.0™ - the latest generation of the Jabra noise cancellation technology which blocks out an astonishing amount of background noise. Sound quality is taken even higher with HD Voice\*, which allows you to hear the other person's voice with unbelievable sound clarity. Automatic Volume control instantly adjusts the headset's volume to best suit your environment, so that the natural sound of your voice is retained on every call. Jabra EXTREME2's superb fit also enhances its sound quality. With the Ultimate Comfort Eargels™ and a choice of wearing styles, the headset will sit comfortably and securely, keeping you at ease whenever you're wearing it.

By registering your product, you will be notified of future software releases which will ensure you have all the latest features installed to get the most from your Jabra EXTREME2. To keep your headset up-to-date, simply download new software versions via USB connector. With Jabra EXTREME2, you will enjoy clear hands-free conversations – anytime and anywhere.



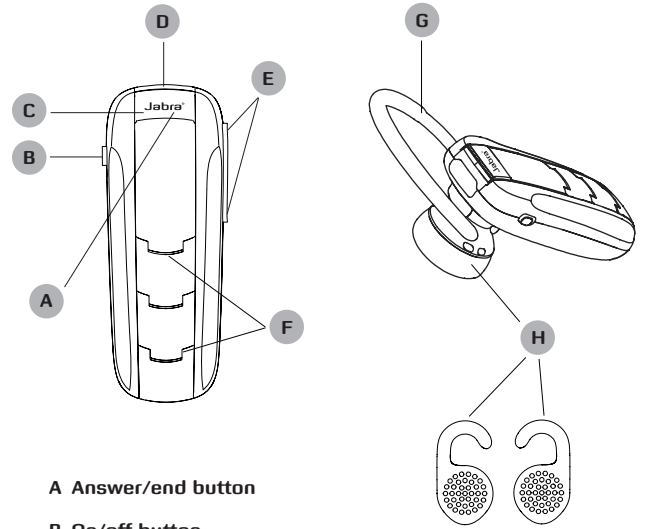
### Reasons to choose the Jabra EXTREME2

- EXTREME NOISE CANCELLATION with Noise Blackout™ 3.0 dual microphone technology
- HD Voice\*
- Spoken Caller ID, battery level, connection status and setup process with Voice Guidance



\* Phone & network dependent





- A Answer/end button**
- B On/off button**
- C LED light**
- D Charging socket**
- E Volume up/volume down**

- F Microphones**
- G Earhook**
- H Eargels**

## Quick Start Guide

### Charging your headset

Charge your Jabra EXTREME2 headset until the LED light turns green. After 5 minutes the LED will turn off. Charging time is approximately 2 hours.

### Turning your headset on and off

Slide on/off button to turn the headset on or off. The LED light will flash blue when the headset and voice guidance will tell you that the headset is powered on.

### Pairing the headset with your phone

Turn your headset on and put it on your ear, press and hold the answer/end button until you have heard 3 beeps then release the answer/end button. You will now be voice guided through the pairing process. Activate Bluetooth on the phone and set your phone to search for Bluetooth devices and select Jabra EXTREME2. Press 'Yes' or 'OK' on the phone and if asked for a PIN code confirm with PIN code 0000 (4 zeros).

### Using your headset

- Answer a call – Tap the answer/end button on your headset
- End a call – Tap the answer/end button to end an active call

### Wearing style

Wear the Jabra EXTREME2 headset with or without an ear hook. To wear with an ear hook please find the appropriate size and attach for right or left ear wearing. To wear without ear hook please find the appropriately sized Ultimate Comfort Eargel™ and attach for right or left ear wearing.

## Features and Specifications

1. Noise Blackout™ 3.0 dual microphone technology
2. HD Voice\*
3. Voice Guidance – spoken Caller ID, battery level, connection status and setup process
4. Connects to 2 Bluetooth devices simultaneously with Multiuse™ Technology
5. A2DP Technology for streaming multimedia
6. Ultimate Comfort Eargels for an all-day perfect fit
7. Car charger included
8. Up to 5.5 hours of talk time and 10.5 days of standby time
9. Weighs 10 grams
10. L47mm x W18.5mm x H27.5mm



\* Phone & network dependent